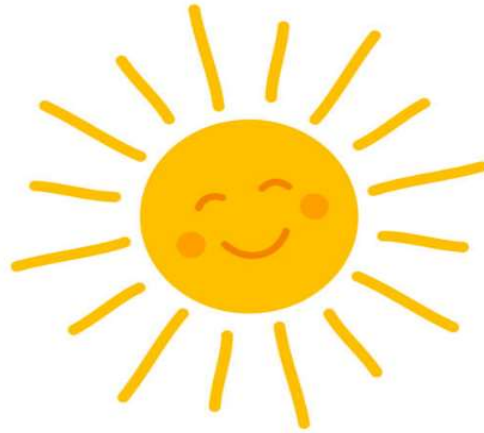


MQHA

Manitoba Quarter Horse Association



MQHA Summer Sizzler Horse Show Featuring AQHA, APHA & CCRHA classes

May 29 - 31, 2026

Assiniboine Credit Union Agriculture Centre - Keystone Centre, Brandon, MB

This show will offer:

DOUBLE MQHA YEAR END POINTS for HIGHPOINT AWARDS

* NAERIC Approved*

We encourage all exhibitors to monitor the MQHA Facebook page for continual updates.

AQHA
AMERICAN QUARTER
HORSE ASSOCIATION

NAERIC
North American Equine Ranching Information Council

CANADIAN
QUARTER
HORSE
ASSOCIATION

Assiniboine Credit Union Agricultural Centre

Keystone Centre 1175 – 18th St., Brandon, MB

Show Manager:

Quinn Brandt

Phone: (204)381-4729

Show Secretary:

Eryn Butterfield

Phone: (204) 792-6777 or

Email: info@mqha.ca

(For entries & stall reservations)

Cheques, Debit & Cash accepted. ATM is on site.

Please note that pre-entries will be accepted. Registration papers, membership cards and class entry forms are required when entering either in advance or at time of show. If pre-entering changes can be made at the show as may be required. No refunds will be given without a veterinarian certificate.

PAYMENT INSTRUCTIONS:

ALL fees must be paid upon invoicing by show secretary prior to leaving the show facility.

Cheques payable to:

MQHA or Manitoba Quarter Horse Association

Cash: will only be accepted by the Show Secretary or

MQHA Treasurer and a cash receipt will be issued.

Debit: payments can be accepted on Square

E-Transfer: mqhapayments@gmail.com (in notes state name or entry number you are paying)

ALL FEES MUST BE PAID BEFORE LEAVING SHOW otherwise a late payment fee of \$25 will be charged.

Show Office Hours:

To be announced and posted accordingly on MQHA website & Facebook page.

General Information

STALL FEES & SHAVINGS:

All horses must either pay stall or ground fees.

Stalls are not included in All-Inclusive Entry fees.

Box & Tack Stalls:

Circuit (3 nights)	\$150.00
Extra Night (on circuit fee)	\$ 40.00
1 Night	\$ 70.00

Daily Ground Fees: (if box stall is not used) \$25.00

This applies to any horse on the grounds not using a stall.

NOTE: DO NOT change stall assignments. This can only be done by the Secretary or Show Manager.

Empty Stalls: No unauthorized use of empty stalls for storage, temporary use or day use. Violators will be charged with additional stall rental.

Shavings: Must be Pre-booked \$10.00 per bale

Please note shavings are not self-serve. Orders for additional bales at the show must be placed through the Show Office.

Official Host Hotel:

Canad Inn – 1175 – 188th St. Brandon, MB

Phone: (204) 727-1422

Booking Block #1125025 or Manitoba Quarter Horse Association. MQHA group rate \$139/night plus tax for two queen or one king room. Check in May 27th check out May 31st. Rooms must be booked by April 26th.

Judges:

Show One

Judge 1 Jan Larsen, Kalispell, MT (Tie Breaker Judge)

Show Two

Judge 2 Michael Jung, Farmington, UT

Judge 3 Robin Jung, Farmington, UT

Dates to Remember:

Stall Reservations	Thurs. May 21 st
Camping Reservations	Thurs. May 21 st
Standard Arrival	Thurs. May 28 th , 8:00 am
Early Arrival	Wed. May 27 th , 4:00pm

(early arrival must be prearranged)

CAMPING SITES:

Electrical only:

30 amp	\$40.00 per night
15 amp	\$40.00 per night

Full Service: (water & sewer):

50 amp	\$60.00 per night
(4 only – first come/first serve)	
30 amp	\$53.00 per night

ARRIVAL TIME:

Horses may arrive starting at 8:00 am on Thursday, May 28th. Stall charts and Camping charts will be posted at the East end of the barns. Please note that if you arrive late at night, the barns may be locked. If that occurs, you can call the Security number (204)726-3511 posted on the doors for them to let you in or the Show Manager.

Early Arrival: If you wish to arrive prior to 8:00 am, Thurs. May 28th, you must notify the Show Secretary or Manager. You MAY arrive after 4:00pm

on Wed. May 27th and will be subject to an extra night stabling fee.

Show Arena & Warm Up Access: The show arena and warm up area will be available at 12 noon, Thurs. May 28th.

If you want to ride or exercise your horse prior to this time, you will need to make arrangements with the Keystone Centre and pay their rental fee. Outdoor arenas are not rented by MQHA.

MQHA/AQHA Information

MQHA shows follow AQHA Rules.

SPHC shows follow APHA Rules.

Show Management Decision is Final.

MQHA/AQHA MEMBERSHIPS:

Manitoba Quarter Horse Association memberships and AQHA memberships may be purchased at the Show Office. Online membership form: mqha.ca

SPHC & APHA MEMBERSHIPS:

Sask Paint Horse Club and APHA memberships may be purchased at the Show Office or online: www.saskpainthorseclub.com

***Note: MQHA or SPHC membership is required** to be eligible for the **Unlimited Class Fees**.

AQHA/APHA CLASS FEES:

Youth (All Ages):

Individual Classes: \$16.00/class/judge

***Youth Unlimited Class Fee:** \$195.00/horse

Includes: office fees & entry fees. If you show in more than 3 classes/judge per division the Unlimited Fee shall be applied. Does not include paid warm ups, Processing Fees, CCRHA or All Breed classes.

Amateur & Open:

Individual Classes: \$22.00/class/judge

***Open/Amateur Unlimited Class fee:** \$380.00/horse

Includes: office fees & entry fees. If you show in more than 5 classes/judge per division the Unlimited Fee shall be applied. Does not include paid warm ups, Processing Fees, CCRHA or All Breed classes.

AQHA/APHA Office Fees: \$50.00/Horse

AQHA processing Fee: \$15 /Horse/Judge

APHA Processing & Payment Points fee:
\$5.00/class/judge

All Breed Small Fry:

Small Fry 12 & Under – Walk/jog:

No charge on entries, only pay office & stall fee

Exhibitors entered in this division may not cross enter into the AQHA Youth. However, if there is a horse being used in an AQHA division (Open, Amateur or Youth), it may be entered into the Small Fry with another exhibitor.

Lead Line: No charge, ages 6 & under, all-breed

Office Fees: \$25.00/Horse

*if a horse also enters into AQHA classes, it will pay the AQHA office fee instead.

Paid Warm Ups (all categories)

Hunter Under Saddle(*optional*) \$10.00/horse

Western Pleasure(*optional*) \$10.00/horse

Trail (All –Around & Ranch) \$20.00/horse

Trail Warm Up Fee is applicable to every horse showing trail in the All-Around Division & Ranch including Youth.

CCRHA SECTION:

CCRHA CLASS FEES:

Individual Classes: \$20/judge +\$20/entry

*\$10/entry goes to payback

Office Fees: \$30.00/Horse

*if a horse also enters into AQHA classes, it will pay the AQHA office fee instead.

All entrants must be CCRHA members.

Stall Reservations, Camping, and Ground Fees payable to MQHA as per General Section.

All-Around Trail Warm Up fee is Mandatory. Paid warm ups for HUS & WP are optional. All are payable to MQHA as per fee noted in MQHA section.

**WATCH OUR SOCIAL MEDIA
PAGES AND OUR WEBSITE
FOR EXCITING SIDE POTS TO
BE ANNOUNCED CLOSER TO
THE SHOW**

MQHA CIRCUIT AWARDS

High Point Open Halter Stallion	High Point Open Junior Horse	High Point Youth Level 1
High Point Open Halter Gelding	High Point Non-Pro Green Horse	High Point Youth Walk/Trot
High Point Open Halter Mare	High Point Small-Fry	High Point Amateur Level 1
High Point Open Level 1 Horse	High Point Youth 18 & Under	High Point Select Amateur
High Point Open Senior Horse	High Point Amateur Walk/Trot	High Point Amateur

Horses must show in 3 AQHA class categories in the respective division to be eligible for the High Point Circuit Award.

SPHC CIRCUIT AWARDS

High Point Open Jr Horse	High Point Novice Youth	High Point Novice Amateur
High Point Open Senior Horse	High Point Youth W/T 5 -10	High Point Amateur W/T
High Point Green Horse	High Point Youth W/T 11-18	High Point Amateur
High Point Open Yearling	High Point Youth 18 & Under	High Point Amateur Yearling
High Point Open Two Year Old In Hand		High Point Am. Two Year Old In Hand

**HIGH POINT SUPREME HALTER HORSE ALL BREED
(ALL GRAND CHAMPIONS WILL COME BACK TO THE RING AT THE END OF HALTER TO
COMPETE IN THIS CLASS)**

**MQHA YEAR END AWARDS:
Summer Sizzler Show will offer –
DOUBLE MQHA YEAR END POINTS for HIGHPOINT AWARDS**

In order to be eligible for MQHA Year End Awards all exhibitors **and** owners must have current MQHA membership.

For further information on MQHA please visit our website at: <http://www.mqha.ca/> or follow us on Facebook at: Manitoba Quarter Horse Association Inc.



**MQHA appreciates all sponsors, volunteers, exhibitors and spectators for choosing to spend the weekend with us, enjoying what we do with horses together.
MQHA is committed to providing a respectful, safe sport environment for all.**